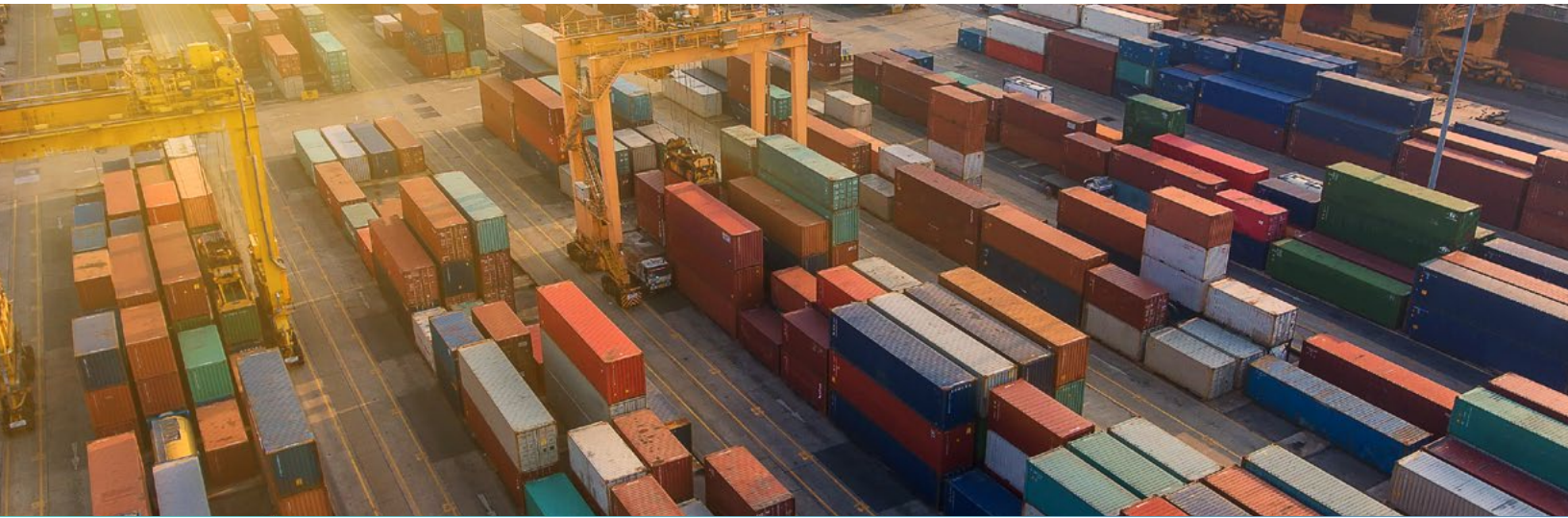


# Global Freight Audit & Payment Solution



The enVista solution provides the ability to audit and pay freight and parcel bills for any mode of transportation to and from any location across the globe, in any currency or language, for clients to improve their supply chain operations.

Many companies are losing money because they are paying charges they should not be, paying higher freight rates than necessary or simply using inefficient processes. These issues create a significant impact on the transportation spend bottom line. Using enVista's proprietary, cloud-based global freight audit and payment solution, myShipINFO®, the enVista team can audit and pay freight bills for any mode of transportation to and from any location across the globe, in any currency or language. Our team can turn that information into actionable business intelligence for clients to improve end-to-end supply chain operations.

To meet the needs of global shippers, enVista employs resources across the globe, including global headquarters in Carmel, Indiana, U.S.; EMEA headquarters in Ellesmere Port, UK; and APAC headquarters in Hyderabad, India.

## Freight Audit & Payment

enVista is uniquely able to maximize carrier credits and deliver optimal client results through an auditing team with decades of experience and an internal call center. enVista will audit every detail of the freight bill invoice, comparing the actual rates and accessorial charges billed to you with the rates in your tariff(s) on all domestic and international freight shipments. Our audit solution utilizes a call center to maximize parcel credits, which helps companies receive 30 percent of credits that are denied by other carriers' automated systems.

## Visibility

Transportation leaders manage large amounts of disparate data in order to track and analyze their transportation spend. Financial managers want visibility to accurate spend data on a consistent basis to make informed decisions and we can help! myShipINFO® and the enVista team work together to deliver enhanced visibility to transportation expenses. Your company will have convenient access to business intelligence and accurate transportation data within a single portal, enabling critical analysis and decision-making from anywhere.

## End-to-End Transportation Solutions






 <b>Invoice Audit &amp; Automation</b>	 <b>Finance &amp; Payment</b>	 <b>Business Intelligence</b>	 <b>Network Analytics</b>	 <b>Consulting Services</b>
Parcel Audit	Carrier Bill Payment	Business Intelligence	Proactive Account Analyst	Strategic Initiatives
Global Freight	GL Cost Allocation	KPI Modeling	Market Impact Analysis	Contract Optimization
Match Pay	Cash Flow Management	Systems Integration	Network Optimization	Strategic Sourcing
Data Normalization	Month-End & Accrual Reporting	Order Match	Carbon Emissions KPI	Peer Benchmarking
Operational Controls	ERP Integration	Carrier & Vendor Scorecarding	Sustainability KPI	Strategy Roadmapping
Carrier Services				Ad hoc Analytics

Figure 1: Business Intelligence in MyShipINFO®

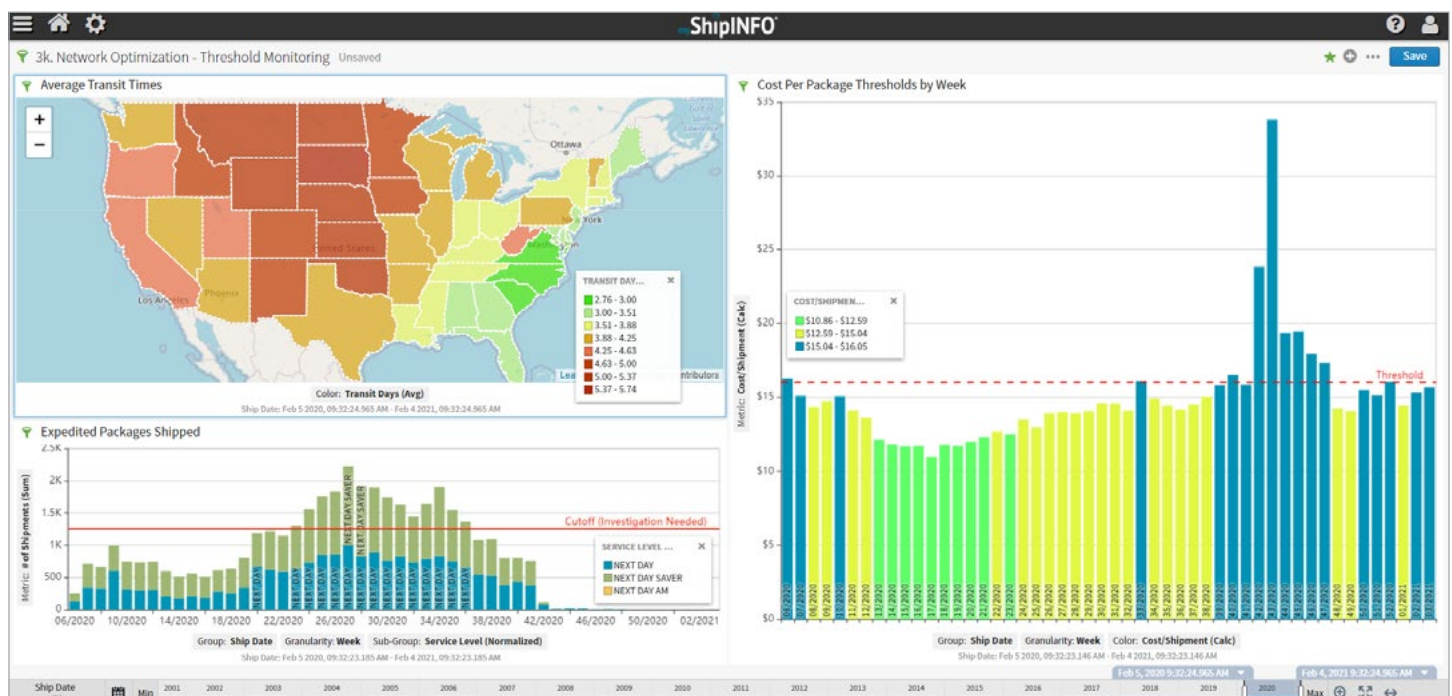
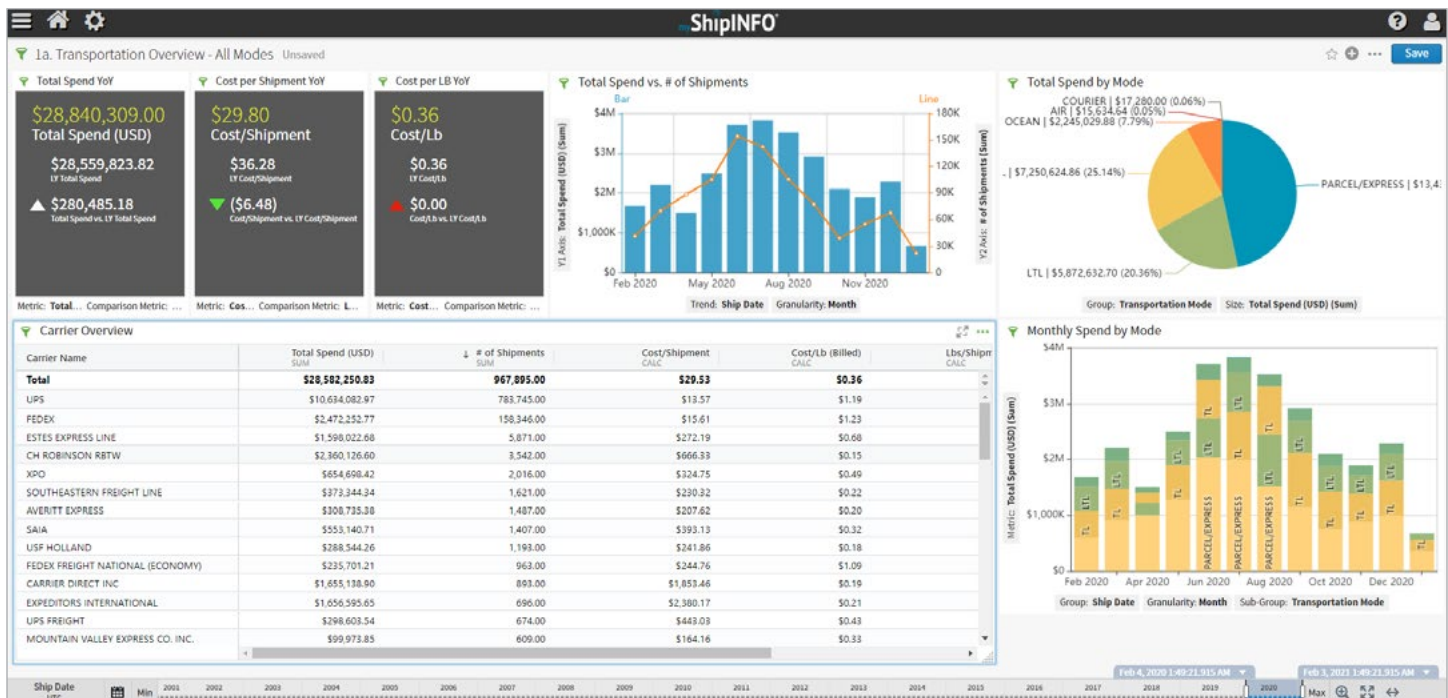


Figure 1: Business Intelligence in MyShipINFO® (continued)



## Integration & Order Match

myShipINFO® can be fully integrated across all sources of shipment and order data. Using a common reference across invoice and order data, like a bill of lading or tracking number, myShipINFO® matches all relevant data sources to create a comprehensive, robust dataset that transforms reporting capabilities. This "order match" process results in dynamic accrual reporting, operational compliance controls and wholistic business intelligence (BI).

## Multi-Lingual Application

enVista has a global infrastructure, operating on a single platform for all your invoice audit and visibility across the globe. We leverage regional offices for customer support and implementations, and myShipINFO® allows for currency and language conversion to handle your business no matter where it is taking place in the world.

myShipINFO® provides many tools at your disposal to meet your transportation needs while saving you time and money:

- Efficient communication
- Visibility, command and control
- Accessibility
- Scalability
- Availability

## Customer Service

We have customer support in the United States, Italy, Spain, China, Singapore and India with dedicated teams of project managers, auditors, analysts and coordinators. We have a multi-lingual staff and application that supports both a customer help desk and a carrier-specific help desk.



## GL and Order Match Engine

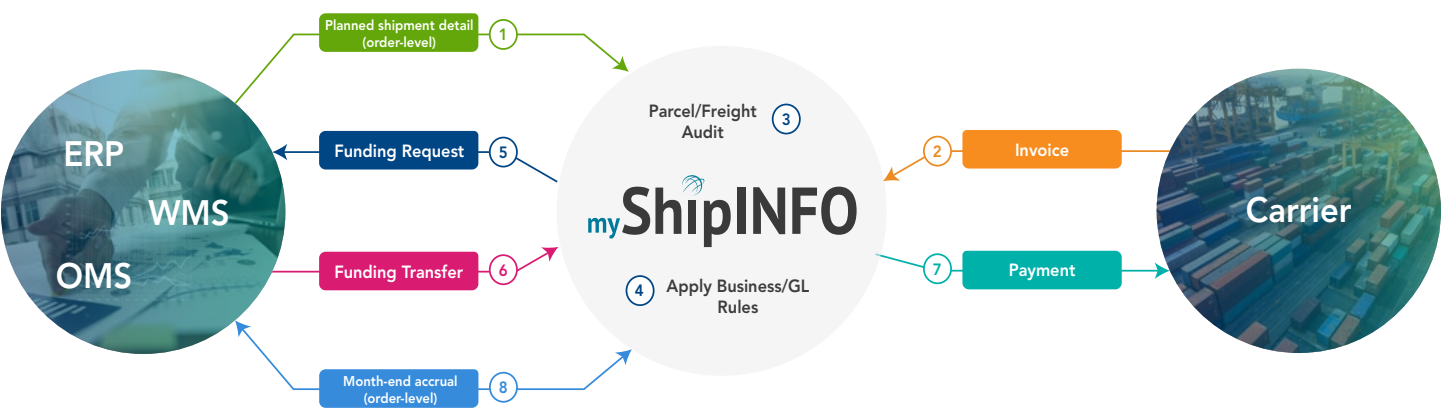
enVista has a proprietary GL and Order Match Engine that allows our solution to handle complex allocation logic across the globe. We can increase visibility at a variety of levels – from whole regions all the way down to the SKU-level. enVista’s order match engine includes the ability for clients to make data table adjustments (e.g., address, cost centers, charge codes, etc.) in real time through a dedicated file transfer protocol.

## Bill Payment Controls

enVista’s MyShipINFO® has a variety of bill payment controls designed to make the audit and payment process easier and more transparent from start to finish.



Figure 2: Integration Flow Diagram



## Benefits of MyShipINFO®:

- Processes transportation invoices regardless of invoice method (paper, EDI, ODE or even a template provided by enVista)
- Identifies duplicate billing, invalid base rates, invalid fuel and accessorial charges, and parcel service level commitment failures
- Incorporates customer-specific audit rules to increase controls and provide KPI reporting which details all activity
- Allows for robust exception management in the invoice payment process
- We audit over 5,000 carriers, all modes of transportation, transact stable currencies and translate 14 languages in 100+ countries in myShipINFO® to provide our clients comprehensive global coverage

Figure 3: enVista Locations



## Conclusion

Your business deserves more than a firm that just obtains refunds. You need a company that will monitor your freight spend and provide recommendations to ensure that you are not leaking money—either by paying charges you should not, paying rates higher than you should or by using inefficient processes. enVista's team of transportation experts, together with myShipINFO®, can protect your company against those pitfalls and help you reach your transportation goals across the globe.

**Consulting and solutions delivery is in our DNA.**

**Let's have a conversation.™**

[info@envistacorp.com](mailto:info@envistacorp.com) | [envistacorp.com](http://envistacorp.com)



## Financials



**525M**

annual transactions



**40M**

invoices processed  
annually (saving 1.5%)



**\$11B**

spend managed annually



**\$3.5B**

payments made



**\$1.7B**

annual strategic sourcing  
customer engagements  
(saving ~9.6%)

## Trusted Partner

FAP business established **2002**

Deep executive experience

Banking Relationship with  
JP Morgan Chase



**400+**

customers worldwide



**98%**

retention rate



ISO 27001 certified  
SOC-2 certified  
data protection trust



**20 years**

Founded in 2002

## Global Reach



**200**

transportation professionals  
across **10** countries



**14+**

languages  
translated  
in MSI



**168**

currencies  
transacted

All modes of  
transportation  
covered